

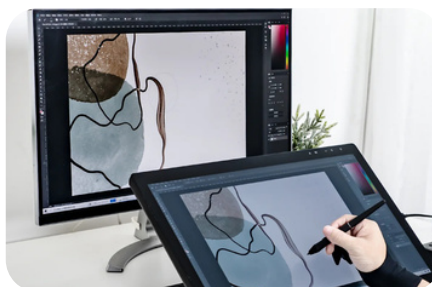


## DESCRIPTION

The **IM2150 21.5-Inch EMR Touch Monitor** is a high-performance display designed for precision, responsiveness, and durability. Featuring Electromagnetic Resonance (EMR) touch technology, it delivers ultra-accurate input recognition, making it ideal for professional applications such as digital design, medical imaging, education, and industrial control systems. With a 21.5-inch Full HD (1920x1080) display, the monitor provides crisp visuals with excellent color accuracy and wide viewing angles. The anti-glare surface ensures comfortable usage, reducing reflections and eye strain.

## FEATURES

- **21.5-Inch High-Resolution Display**– Delivers crisp and vibrant visuals with a full HD (1920x1080) resolution, ensuring clarity and precision in every detail.
- **Electromagnetic Resonance (EMR)**– Provides an ultra-responsive and accurate pen-based input experience, ideal for digital drawing, annotation, and professional design work.
- **Superior Pen Pressure Sensitivity**– Supports multiple levels of pressure sensitivity, enabling natural and precise strokes for a seamless writing and drawing experience.
- **Wide Viewing Angles**– Advanced panel technology ensures consistent and vivid colors from various angles, enhancing user experience in different working environments.
- **Ergonomic and Durable Design**– Features a robust yet sleek build with an adjustable stand for comfortable usage and optimal viewing positions.
- **Seamless Connectivity**– Equipped with multiple input options, including HDMI, DisplayPort, and USB, ensuring compatibility with a wide range of devices.



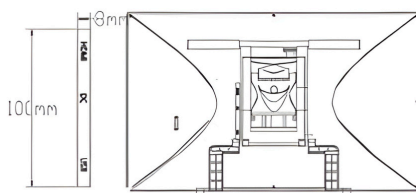
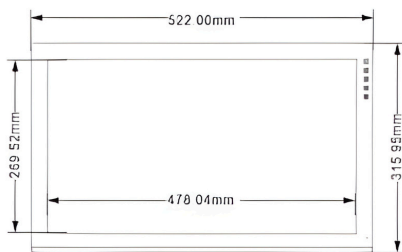
# SPECIFICATIONS

Size	21.5"	Life Time	≥30,000hrs
Resolution	FHD 1920*1080	Response Time	14/11ms(Tr/Td) (typ)
Glass Type	HD tempered	Handwriting resolution	5080LPI
Laminating process	Frame sticker	pen tilt angle	±45°
Pressure sensitivity level	8192	Sensing height	5-10mm
Contrast Ratio	1000:1 (typ)	display interface	HDMI
Support color	16.7M	Data interface	USB
(Brightness)	250cd/m <sup>2</sup> (±30)	Input power	DC 12V/3A
Product Size (W x D x H)	570mm*328mm*38.6mm	electromagnetic technology	wireless passive technology
Viewing Angle)	178(89/89) / 178(89/89) (Typ)	Reading and writing speed	266PPS
(Color Gamut)(X% NTSC)	72% NTSC (CLE1973)	Touch Accuracy	±0.5mm (middle area) ±1mm (edge range)

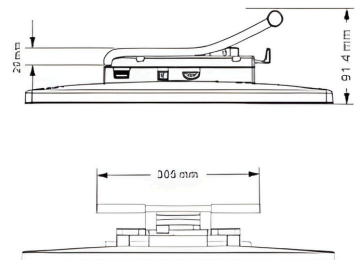
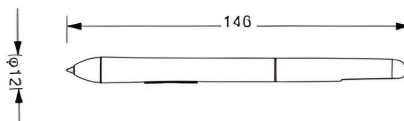
## DIMENSIONS

### Product size

Display screen specification size



Digital pen specification size



**Cannex Technology Inc.**

台灣日旭科技

No.182, Sec. 2, Yuanlu Rd., Sihu Town 514, Changhua County, Taiwan Tel:- +886-4-8613883, FAX:-

+886-6-8828209, Email:- sales@amplimic.com.tw

Home Page : <http://www.amplimic.com.tw>